

East Terrace Views!

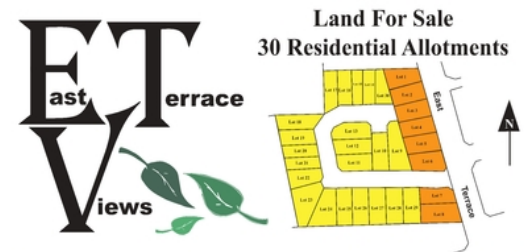
\$225,445

Build your dream home in this stunning new development, comprising of only 30 exclusive allotments. Boasting views over Dead Man's Pass only minutes from Gawler's Main Street and all of its amenities, this is a rare and exciting opportunity for the lucky new residents.

The second stage has just been released with 22 allotments, from 300-660m2 Ready to build and enjoy becoming part of a great community! Gas, power and water available be quick to secure the perfect location to build your dream home, call Kies Real Estate today 08 85233 777.

RLA 249396

Disclaimer: Every care has been taken to verify the correctness of all details used in this advertisement. However, no warranty or representative is given or made as to the correctness of information supplied and neither the owners nor their agent can accept responsibility for error or omissions. Interested persons should seek their own enquiries



We'll get you where you want to go !

3A Adelaide Rd, Gawler

(08) 8523 3777

enquires@kies.com.au



Upcoming Inspections

Inspect by appointment, contact agent.

Land Size

457 m²

Kies Real Estate

enquiries@kies.com.au

08 8523 3777

3A Adelaide Road, Gawler 5118